



# STATEWIDE ASD UPDATES 2022



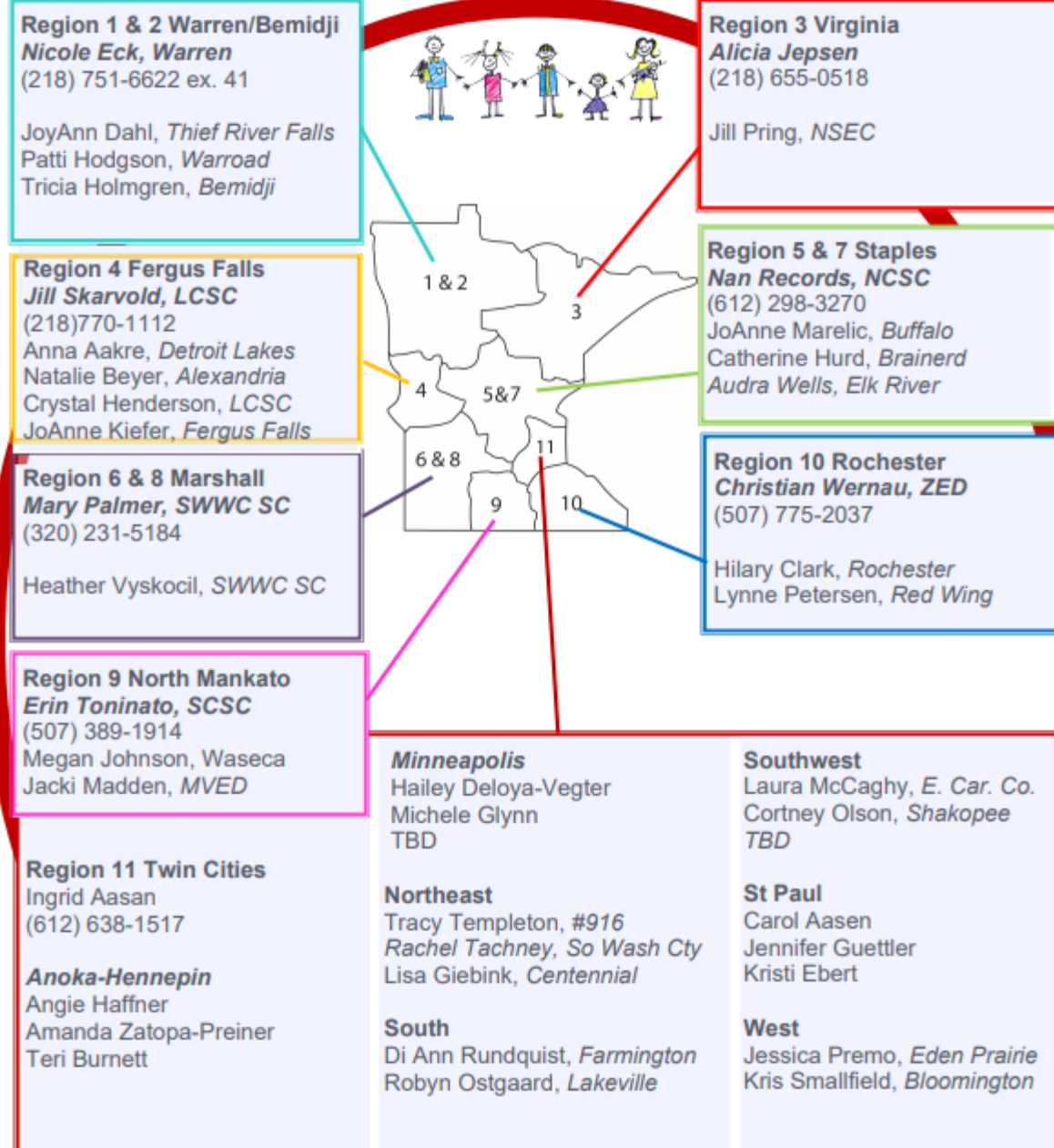
Welcome to each and every one of you!!!  
Thank you for being here!



# ASD Statewide Community of Practice 2021-2022 Members List

## ASD Statewide Community of Practice 2021-2022

**Tami Childs, Statewide ASD and OHD Specialist, [tami.childs@metroecsu.org](mailto:tami.childs@metroecsu.org)**



# ASD Member Feedback from Spring 2021

- Advanced workshops on EBPs
- Online training modules or webinars
- Executive Functioning
- Transition and curriculum to offer districts
- Tech apps for teaching reading math and social skills
- Students on the spectrum and LGBTQ
- Cultural Competency

# ASD Member Feedback from Fall 2021

- 68% want advanced workshops on EBPs.
- 50% want on-line training modules or webinars
- Topics you'd like to learn more about:
  - Executive Functioning
  - Neurodiversity Movement
  - AAC – what are districts doing?

# Topics we will cover in MN State Updates

- Review MN Resources for ASD
- Current Demographic Data
- Current Activities/Events
- ASD Assessment Manual
- MN Statewide ASD Monthly Newsletter

# Metro ECSU ASD Webpage

## [ASD Resources webpage](http://www.mnlowincidenceprojects.org/Projects/asd/asdResources.html)

(<http://www.mnlowincidenceprojects.org/Projects/asd/asdResources.html>)

What you can find here:

- MN ASD Assessment Guide
- MN ASD Criteria
- Minnesota Autism Resource Portal
- MN Pathways for Services and Supports for ASD
- and more...

# MN EBPs USING STAR Webpage

Also on the Metro ECSU website.

## [STAR Webpage](http://www.mnlowincidenceprojects.org/Projects/star/index.html)

(<http://www.mnlowincidenceprojects.org/Projects/star/index.html>)

What you can find here:

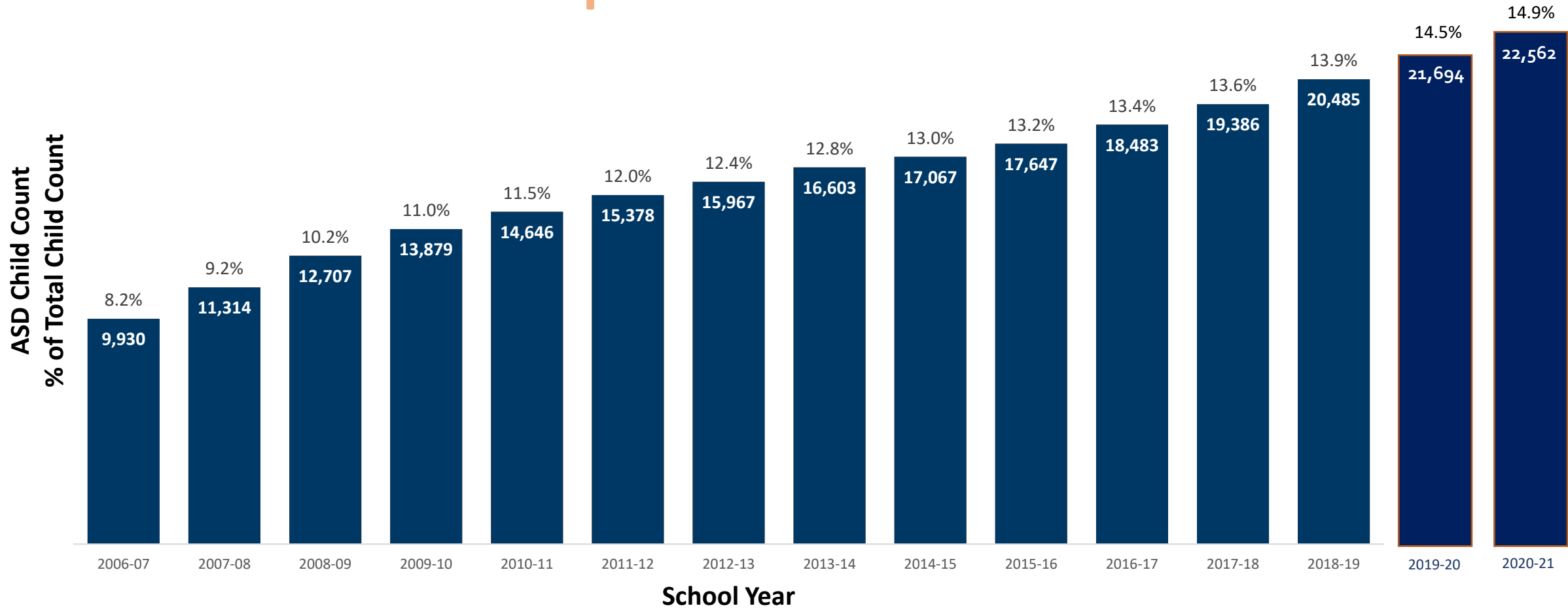
- How to sign up for a SOLS and Media Center Account – FREE THIS YEAR!
- STAR Training Bytes
- STAR and LINKS Pacing Guides
- LINKS Implementation Video
- IEP Goals/Objectives linked with STAR



# Current Demographic Data

# Minnesota Child Count Ages 0-21

## Autism Spectrum Disorder



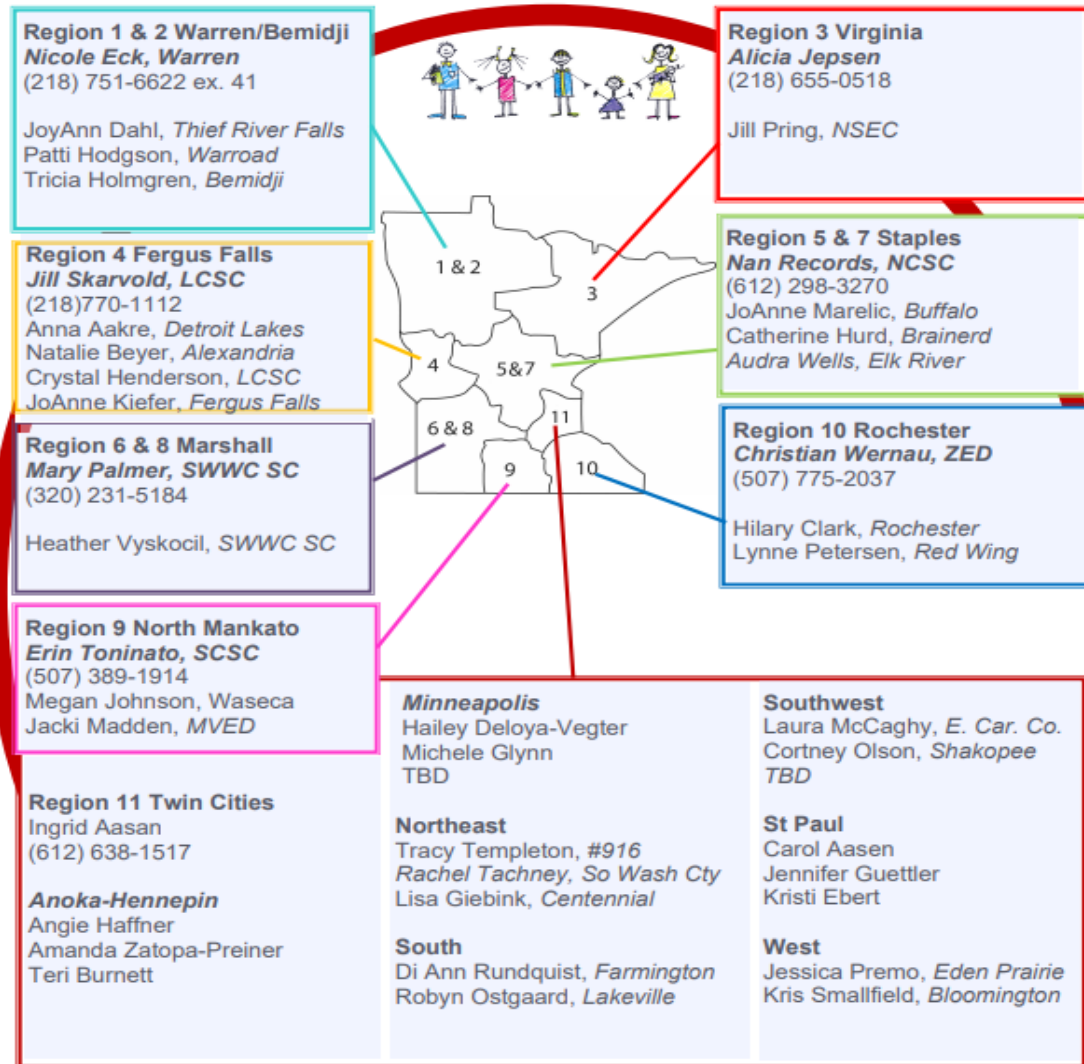
# Annual ASD Events 2021-2022

- ASD Statewide CoP Meeting & Training (Fall and Spring)
- Regional and Subregional Meetings & Training
- State Autism Conference (MN Autism Society, April 27-29, 2022)
- Summer Symposium (MDE, Metro ECSU, St Thomas, AuSM, in August)
- Charting the Cs (Metro ECSU, in November)
- STAR Quarterly Webinars
  - Dec 7, Mar 1, and May 3 from 3-4 pm
- Midyear STAR/LINKS In Person Training at the ECSU, Feb 2, 2022 9-3pm

# Regional Highlights

## ASD Statewide Community of Practice 2021-2022

**Tami Childs, Statewide ASD and OHD Specialist, [tami.childs@metroecsu.org](mailto:tami.childs@metroecsu.org)**



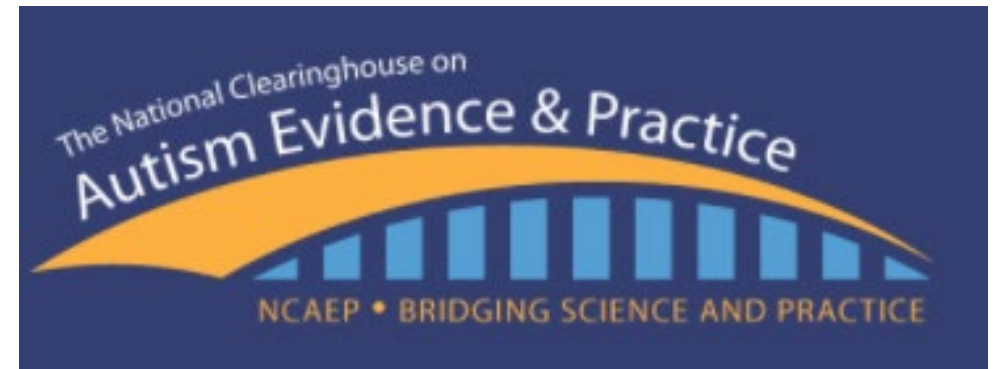
Low Incidence

# EBPs!!

- NPDC-ASD is now The National Clearinghouse on Autism Evidence and Practice (NCAEP)
- 27 Evidence Based Practices
- Aligned with AFIRM Modules



Autism Focused Intervention  
Resources & Modules



AUTISM INTERNET  
MODULES

- 
- Don't forget about the Autism Internet Modules (AIM)

*Our NEW and much anticipated report on Evidence-Based Practices is complete and ready for you. [View Report >](#)*



## BRIDGING SCIENCE AND PRACTICE

The National Clearinghouse on Autism Evidence and Practice (NCAEP) is a continuation of the systematic review completed by the National Professional Development Center on Autism Spectrum



## 2020 EVIDENCE- BASED PRACTICES REPORT

**Evidence-Based Practices for Children, Youth, and Young Adults with Autism**

Our new report synthesizes intervention research published between 1990 and 2017. Check out



## AUTISM FOCUSED INTERVENTION RESOURCES AND MODULES

The Autism Focused Intervention Resources and Modules (AFIRM) are a free online tool designed to ensure that practitioners and families can **USE** these practices once they are identified through the review.

Formerly NPDC-ASD

# New!



**A F I R M**  
*for* Paraprofessionals  
Autism Focused Intervention  
Resources and Modules

***NEW! Modules for Paraprofessionals including  
Reinforcement, Prompting, Supporting Peer  
Interactions, Time Delay, and Visual Cues***

# SOLS for the Classroom 2021-2022

- Statewide access for 2021-2022 for ALL MN Educators
- 812 active users in MN this school year
- Free SOLS 2.0 account included the STAR Media Center
- All regions participating
- NEW: Using SOLS for group instruction!
- MN SOLS Account for next year?
- MN Statewide SOLS and STAR Media Center Account Usage



# ASD Assessment Manual

---

## [ASD Assessment Guide](https://www.mnlowincidenceprojects.org/Projects/asd/asdAssessmentGuide.html)

(<https://www.mnlowincidenceprojects.org/Projects/asd/asdAssessmentGuide.html>)

## MN Low Incidence Projects Autism Assessment Resources Guide - 2021



# Autism Assessment Resources Guide 2021

## About this Manual

The **2021 Autism Assessment Resources Guide** is the fifth update to the educational evaluation guide for Minnesota and includes resources from early childhood through transition age as well as guidance on prereferral to program planning for students with suspected ASD.

The Autism Assessment Resource Guide 2021 is expanded to both, 1) provide guidance to educators who are new to the educational evaluation of suspected ASD, and to 2) provide veteran educators with a repository of assessment resources. This updated guide parallels the assessment process and includes a brief description as well as recommended resources and tools related to the steps of the process.

The links below are all PDF file format.

- [ASD Guide Cover](#)
- [Acknowledgements](#)
- **Table of Contents:**
  - [Introduction](#)
  - [Section 1](#) (General Information on Autism Spectrum Disorders (ASD))
  - [Section 2](#) (Pre-Referral)
  - [Section 3](#) (Evaluation, Developmental Histories, Observations, Standardized (Formal) Assessments, Informal Assessments, Interviews)
  - [Section 4](#) (Transition)
  - [Section 5](#) (Assistive Technology - AT)
  - [Section 6](#) (Executive Functioning)
  - [Section 7](#) (Functional Behavior Assessment - FBA)
  - [Section 8](#) (Conclusion)

[Download ASD Guide - full version](#)

# Minnesota Mentor Project

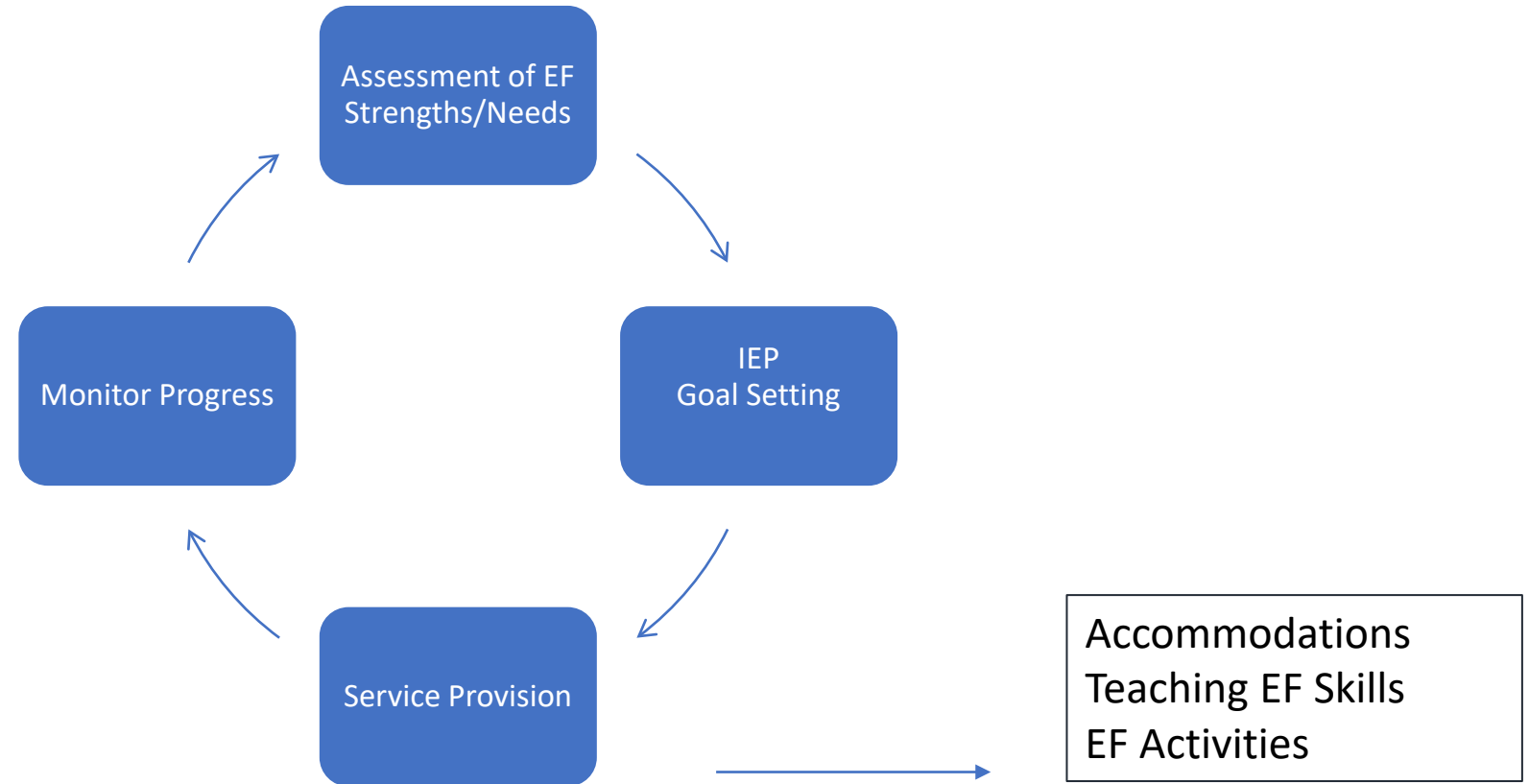
We need you as an ASD Mentor for next school year!

Check out our webpage or contact [ann.mayes@metroecsu.org](mailto:ann.mayes@metroecsu.org) for more information.

# MN Statewide ASD Monthly Newsletter

- Started as a project for the MN Regional Low Incidence Facilitators
- Designed to provide all MN educators resources to increase their skills in teaching students with ASD
  - Special education teachers
  - Related service providers
  - Administrators
  - Paraprofessionals
- Consistent messaging to the field – people know where to go for information

# MN Framework for Executive Function (EF) Professional Development



# Here's a peek into The Executive Functions Masterclass

## Module 1: What are Executive Functions?

In Module 1, learn what Executive Functions are, how they develop, and the critical role they play in all of our lives.

## Module 2: Identifying Executive Function Challenges

In Module 2, learn how to identify executive function struggles in your learners by utilizing a range of informal assessments.

## Module 3: The Goals

In Module 3, learn how to develop a multi-tiered plan to build Executive Functions in a proactive and effective way.

## Module 4: Implementa tion

In Module 4, dive into big picture strategies for strengthening Executive Functions.

## Module 5: Strategies by Skill

In Module 5, break down strategies and best practices by each Executive Functioning skill.

## Module 6: Data and Staff Training

In Module 6, learn how to take ongoing data and train your team to implement strategies effectively.

Sasha Long, The Autism Helper

# Fall 2022 Meeting

- Topics will include:
  - Neurodiversity
  - Are EBPs ABA?
  - Understanding ASD from the autistic perspective



Thank you for your hard work  
and dedication!